

# Business History

## Abbott's Coast to Coast

We moved to Greenbush about September 15, 1945 and lived in a rental house for about two years. We had to move as the rental house was being torn down to make room for the new hospital. In the meantime, my brother Arthur and I built a new house, with quarters for two families. After moving to Greenbush, we waited many weeks for merchandise to come in. I finally got the store (Coast to Coast) opened on November 10, 1945.

The day I opened the store was windy, cold, and a snowstorm was in progress but, nevertheless, we had a good business. We served coffee and doughnuts and I took in about \$350 that day. All merchandise was in short supply following war's end.

In order to attract business to my new store, Coast to Coast Stores gave us a number of items that were in short supply, things you would laugh about today to think they might be scarce - dishpans, dishes, cooking utensils of all kinds. Tires and household appliances were practically nonexistent. After these few items were sold out my stock consisted largely of items that were inferior in many respects, wartime shoddy merchandise. My business went down rapidly until I reached a point where I was wondering whether or not I was going to stay in business.

In a couple of months, I became alarmed since I had rent to pay in the store, rent to pay on the house, and our living costs. It was becoming clear to me that something had to be done. I had contacted Coast to Coast Stores frequently trying to get some merchandise but they didn't have it, so they couldn't get it to me.

Finally in desperation, I **drove** to Minneapolis sometime in January. They had no merchandise but I ran across a store owner from Columbia Heights who had a bunch of power packed batteries. These power packed batteries were used to run radios. Since they had current in Columbia Heights, there wasn't any demand for them. He had a big bunch of them piled up in his store and he was tickled to get rid of them. I was just flabbergasted to be able to get hold of them. I drove my Chevrolet Coupe up to his store and loaded them up. I had power packs all over the place. The trunk was filled. The seat beside me was filled. The little compartment behind the front seat was filled. The car almost stood on its tail I had such a heavy load. It saved the day. When I got home they went out like hotcakes and it helped us to exist.

My store was very small. It was only sixteen feet wide and about fifty-six feet long. It had one row of tables down the middle and shelving on the side. In spite of its size, we did good business. After about three years, merchandise became very plentiful and we did a whirlwind business in the year of 1948. REA came in so the farmers needed a great many different items to take advantage of the REA.

That was the year that we celebrated. I bought Myrtle her first and only fur coat. She was thrilled about it and I bought a new Buick in 1950. So we started getting results for our hard work and all the anxiety we had gone through in getting the store started.

During the years in Greenbush, I was on the school board and served as chairman for about ten years. During that time the State Legislature had passed enabling legislation to consolidate schools

and get rid of a lot of small districts. Roseau County had over a hundred districts. I was on the county reorganization board and when we got through with our work, there were only twelve districts remaining in the county. Through this consolidation, it made much better facilities for the children. They all had bus transportation.

Greenbush had 750 people back in 1945. It is still about the same size today but it's one of the few rural towns in northern Minnesota that has maintained itself and prospered. I operated the store until July of 1954. During those years, our business was good and we won some awards during that period. One year we won the honor of selling the most lightbulbs of anyone of the 434 Coast to Coast stores that were operating at that time. Another year we were commended for selling the most paint in spite of the size of our town and in competition with many larger towns. Then, too, we were recognized one year as having the fastest growth period. This happened to be the year that REA came in, which gave us a big boost to sell merchandise. During this period my brother Art, left Greenbush. He wanted to go out west and he moved to Wichita, Kansas, where he went to work for Boeing Aircraft. That's where he stayed until he retired and later passed away a couple of years ago. He worked in my store about six years.

The long hours in the store began to take its toll on me. I was smoking heavily and became very short of breath. I could hardly walk up a flight of stairs. Then, too, the outlook for small businesses wasn't as good as it was some years before. Large discount stores started springing up in Grand Forks. Later they came into Thief River. I could see the handwriting on the wall for a merchant in a small town, so I finally decided to sell the store. In 1954, I sold the store and we moved to Crookston. The only reason we moved to Crookston was to find a house. Rentals were very scarce all over the country and I was feeling so tough that I thought I had better take some time off to recuperate.

The last year we were in Greenbush, we had growth to our family. Wendy was born October 1, 1953. We never expected to have any more children so we had sold all of our baby furniture and had to stock up again. My what a joy this little gal has been to us! She was born in the hospital in Greenbush and when I took Patsy and Jennifer down to see her, they were really elated. They thought that they should be able to take her home right away. It was such a joy

for us to have a baby in the home again and she was great company from then on.

Note: Wallace Abbott died in 1998 at the age of 85 of heart failure in Bemidji, Minnesota. He is survived by his wife, Myrtle; three daughters: Patricia Richard-Amato of Colorado Springs, Jennifer Johnson of Cotton, Minnesota, and Wendy Hanson of Grand Marais; and grandson, Dan Hanson



Wallace Abbott with Warren Becken new owner of Coast to Coast in 1954. (photo courtesy of Patricia Amato)

of Duluth.

From "Remembering the Early Years in Minnesota" by Wallace Abbott (1991), pp. 63-65. Wallace Abbott's complete memoirs can be found at the Minnesota Historical Society in St. Paul, The Polk County Historical Society in Crookston, or the Becker County Historical Society in Detroit Lakes.

#### Ace Hardware - GreenUsh. MN

Olaf Hildahl opened a hardware store three miles east of Greenbush around 1898. When the railroad came in 1904, he moved his store to the present site. It took three weeks to move the three miles, but he never lost a day's business. Customers who would stay in the store for a length of time would upon their exit have to walk back a bit to where they tied their team of horses to a tree.



Ace 1950s (Photo courtesy Ann Novacek)

Donald Wicklund started working for Hildahl Hardware on October 1, 1952. Donald was a carpenter, plumber, painter and "a jack of all trades" when Arnold Hildahl asked Donald to work for the hardware store. Vic Kalinowski was a partner and also managed the store.

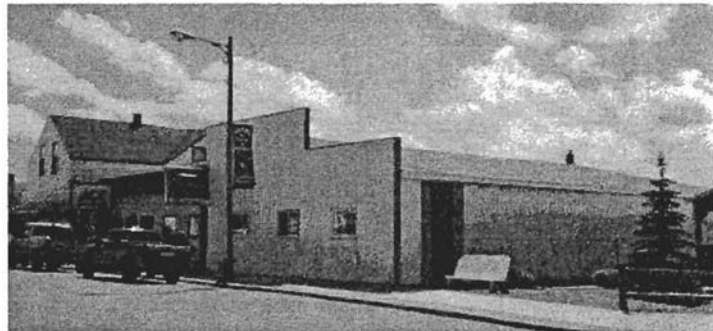
In 1957, Donald became manager and started buying a share in the business. By 1970, he became owner and Dennis Olson began investing, until 1980, when he decided to go into farming, selling his shares to Donald. Doris Wicklund started work in 1959, doing the book work and helping with customers when necessary.



Don Wicklund and Dennis Olson of Ace unloading freight. (Milt Sather photo)

On January 1, 1991 Donald and Doris's sons Dale and Daryl purchased the family business. They built a large addition on the north side of the store which was **used** for storage and eventually became part of the store, where major appliances are on show to the public. The old warehouse was tom down January 1992.

In June 1997, Daryl and Lisa purchased Dale's shares in the business. Dale started his own plumbing business. Daryl manages the hardware business and Lisa does the office work. Currently Ace has two full time and one part-time employees. Daryl and Lisa's daughters Alicia, Anna and Abby help in the store on weekends, holidays, and during the summer vacation.



Ace Store today. (Photo by Linda Gieseke)

The Hildahl Hardware was a very complete store with all farm supplies, some machinery and even caskets. Presently the business deals mainly with major appliances, housewares, paint, general hardware and farm supplies.

The business continues to grow with the expanding economy in the area. We are very fortunate to have such loyal customers and greatly appreciate them. Thank you to all local and area people for shopping at Ace Hardware in Greenbush.

*Submitted by Lisa Wicklund.*

#### Agassiz Insurance Group and Agassiz Realty

Agassiz has roots and history that goes all the way back to 1935 through the establishment of the newly chartered Greenbush State Bank.

In 1937, I.S. Folland joined the bank staff. He assumed and expanded the insurance offerings along with his banking duties. Through the years the need for more attention and assistance to the insurance area grew, and Claire Swanstrom was employed to facilitate that need. In 1954, K.B. Trangsrud joined the bank staff and became involved with the insurance as well as his banking lending responsibilities. By 1961, the volume of insurance business had increased to the extent that it could no longer be handled just by the bank's officers. Clifford Holm was brought in to manage the insurance business and offered income tax services as well.

In 1968, the Greenbush Agency, Inc. was formed. Incorporating officers were I.S. Folland, K.B. Trangsrud and Rod Langaas. Under the management of Rodney Langaas, the insurance agency continued to grow and expand its services. In the mid 70s, real estate brokerage became part of Greenbush Agency. With Chet Stengrim as broker, a vital service was added to serve area customers.

Through the late 70s and earlier 80s, Greenbush Agency continued its growth and expansion. Through acquisitions, affiliated locations were opened in Roseau and Warroad enabling insurance and real estate throughout the county.

Until 1985, the Agency had been located and rented space from Greenbush State Bank. Upon the bank's expansion and remodeling, Greenbush Agency moved next door to the north. The agency remodeled the former Coast to Coast store and leased it from owner, Nazim Alley.

In 1997, the Agency made some more moves and also a name change. The former Sather building (across from Ace Hardware) became available, and the Agency relocated after remodeling was



Agassiz Insurance Group & Agassiz Realty - Greenbush location.  
(Agassiz photo)

complete. Also, Greenbush Agency, Inc. changed its title to Agassiz Insurance Group and Agassiz Realty. This was done to clarify its affiliation and identity more closely with its locations in Roseau and Warroad.

Agassiz Insurance and Realty has always strived to adapt and evolve to be able to provide products and service to its area customers and meet their ever-changing needs.

In 2003, Agassiz Realty expanded by opening an office in Thief River Falls to further broaden a base of the area they serve.

The main reason any business can survive and succeed for over six decades, is its staff and their dedication to their customers.

To acknowledge the people who have made Agassiz, past and present, here is a list of longtime employees:

LS. Folland (1937-1979)	K.B. Trangsrud (1954-1994)
Cliff Holm (1961-1967)	Rod Langaas (1968 to present)
Irene Sather (1970-1985)	Christie Bentow (1976-1987)
Chet Stengrim (1973-1980)	Gary Trangsrud (1980 to present)
Cindy Graff (1986 to present)	Marilee Svegdahl (1987 to present)
Roger Green (1995 to present)	Michelle Beito (2000 to present)

Submitted by: Cindy Graff

Alice's Eat Shop  
The Coffee Shop

Alice Quist first worked for her uncle, Sankey Dufwa, in his cafe as a young lady. Alice moved to Greenbush from Karlstad in 1944 with her son Peter. Merle "Bobby" was in the Navy at the time. The family had moved to Karlstad following the death of her husband, Peter Quist. She opened a small cafe known as Alice's Eat Shop on the east side of Main Street just north of Temanson Chevrolet. Emma Nesteby and Alice Throngaard were part of the kitchen help. Some of the waitresses were Mabel Flaten, Thelma (Solom) Mortrude, and Rose Marie Kukowski, who was probably in high school then.

They lived almost directly across Main Street in a small building that was owned by O.K. Christianson. After that, she and her sister Clara Mortrude owned and operated the M&Q. In 1946, she married Matt Barto. Sometime after the marriage, Alice and Clara severed their partnership. Matt and Alice built a new building on the site previously occupied by their residence and opened the Coffee Shop.

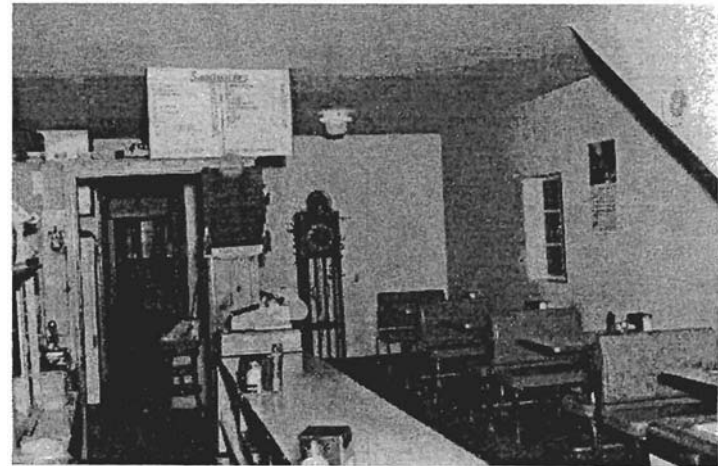
The name Coffee Shop was somewhat a misnomer because the business was actually a hotel with a small cafe consisting of a horse-shoe counter and five booths. Eight rooms were located on the second floor of the building. Seven of the rooms shared a single bathroom and the eighth, which we regarded as the "luxury" room, had its own bathroom. The rooms rented for \$2 a night although there were special rates (\$7.00 a week) for those who stayed a week or longer.



The Coffee Shop April 14, 1964.

Some years later a couple of the rooms and a bathroom were converted into a suite occupied by Pat Halvorson, head nurse at the Greenbush Hospital, who later married Truman Hermanson. Room #1, which was at the top of the stairs, was at one time occupied by James Langaas when he taught at the Greenbush High School. The family living quarters were at the rear of the cafe. Some years later an addition was added to the first floor in back of the living quarters to house the baking facilities.

Alice did most of the cooking and some of the baking. Her right-hand employee continued to be Emma Nesteby who served as dishwasher, assistant cook, and Alice's "Girl Friday." Emma lived by herself across the back alley from the Coffee Shop and stayed a faithful helper for many years until the cafe closed.



The Coffee Shop interior.

Another faithful employee who arrived early weekday mornings to do the baking was Alma Snare. Alma also remained with Alice until the cafe closed. Typically she would start the day by making raised donuts, jelly donuts, long johns and either caramel or cinnamon rolls for the cafe opening at 6:00 a.m. Every third day or so she would also make regular donuts. After that she would bake several pies and perhaps a cake, cupcakes, apple or cherry turnovers, brownies, a jelly roll, cookies, peanut bars, matrimonial bars and other pastries.



The Coffee Shop cooks: Emma Nesteby, Alma Snare and owner Alice Barto.

Some of the kinds of pies Alma made were apple, blueberry, cherry, cherry cream, boysenberry, strawberry, raspberry, graham cracker cream, coconut cream, banana cream, raisin, sour cream raisin, chocolate, chocolate chip, pecan and lemon, just to name a few. Alma made sour cream raisin pie that was "out of this world". Even today none can compare to Alma's.

Some of the prices were donuts 5 cents, raised donuts 10 cents, jelly donuts 15 cents, cake 10 cents, pie 15 cents (a la mode add 5 cents), sandwiches 25 cents, hot sandwiches with potatoes and gravy 45 cents. Noon meals included roast beef and roast pork. In addition there might be meatballs, meatloaf, spareribs, breaded pork chops, sausage and kraut, liver and onions, or some other entree. Fridays always included walleyed pike or other fish entree. The meal consisted of the entree, potatoes and gravy, vegetable, rolls or bread and butter, dessert, and coffee all for 65 cents. Every day a different kind of homemade soup was featured for 15 cents a cup or 25 cents a bowl. Malted milks were 25 cents and coffee 5 cents (later 10 cents).

When coffee was raised to 10 cents the reaction by many customers was outrage. In fact there was a short-lived boycott! Some of the customers, like the girls at the bank, started bringing thermoses to work. Bear in mind that the price of coffee included many refills including cream and sugar. One customer filled his cup one-fourth full of cream and several spoons of sugar!



The Coffee Shop customers.

Alice was known for her generosity. Occasionally there would be a customer down on his luck and she would either provide a free meal or charge it. Many "charge slips" were never paid. There were some customers with children who were poor and worked hard to keep body and soul together. Alice would take the children by the hand, lead them behind the horseshoe counter, and let them select a free candy bar or package of gum. During the holidays, when the cafe was closed, she would invite townspeople who had nowhere else to go for dinner. (Clara did the same at the M&Q.)

Over the years many others worked at the Coffee Shop, mostly as waitresses. Among those were: Susan (Brandvold) Brorson, Sandra (Brandvold) Cook, Patricia Kasproicz, Margaret Anderson, Nora Flaten, Maryl Flaten, Florence McFarlane, Edna Wiskow, Bertha Klemetson, Ardith Kirkeide, Jeanette Nesteby and Norma Witzman. The wages paid in those days were 35 cents an hour, which seems low by today's standards, but were in line with prices generally. Many former employees have remarked **about** what a good employer Alice was and how easy it was to work for her.

*Submitted by Peter Quist*

*Photos courtesy of Peter Quist*

### Alme Construction and Millwork

Upon returning from serving in the Army during the Vietnam War Era, Leslie started his construction business in 1972. He began by building spec houses for sale, which he would build and sell to a future home owner, and arrange for moving the house to the owner's property. Leslie has built numerous houses for local homeowners in Roseau and surrounding counties.

In the late 1980s, Leslie purchased a molder machine from Marvin Windows which he had to change over from 3-phase to standard electricity. Leslie has built two dryers for drying hardwoods such as oak, ash and birch. He tests the wood for moisture content before putting the wood through the molder to create the original design of molding.

For over ten years, Leslie has been using the molder to make base-board trim, window and door casings, fireplace mantles, wood flooring and stairway parts if needed to meet the needs of the public. If the customer wants something unique or special, Leslie will do his best to create it!

In addition to moldings for new construction projects, Leslie has used a grinder to cut a profile into a knife to fit the molder. He will create profiles to match the unique decor of the past for restoration purposes in homes, churches and businesses.

Leslie has usually worked alone or with another person in his business. Occasionally the homeowner will assist on portions of a building project.

Wood has been part of Leslie's liking since a young age. At 13 years, he crafted his first violin which he still plays music on today. He does have a couple more he made and uses.

He has a wife, Randy, and three daughters, Anna, Carrie and Karla.  
*Submitted by Randy Alme*

### Anderson Electric

In 1935, Harley Anderson went to Chicago, Illinois to an electrical trade school. When he graduated, he returned to the Greenbush area and worked at various electrical jobs.

He married Thelma Eeg. When WWII started, he moved his family to Riverside, California, and worked in a defense plant wiring airplanes for the war.

After the war, he came to Greenbush. Harley's father, Knute, had a 40 acre piece of land on the north end of town. Knute had moved off his farm and built his house right on the middle of Main Street about one block north of the Legion Building. Harley bought Knute's house and forty acres. Then he surveyed and developed it into lots and moved Knute's house to the lot now owned by Maurice Bertilrud.

About then the REA (Rural Electrification) arrived so he was busy wiring farm buildings. His employees were his brother, Bert, and a young veteran, Axel Lieberg.

Harley also had an appliance and electrical store in the building that is now the south part of the Greenbush Pharmacy. About 1956 things were slack so he moved to Hopkins, Minnesota which was beginning a growth period. People were moving to the cities in droves so that's where the work was. His children were Leroy, Terry and Rodney. Harley and Thelma are buried in the Pauli Cemetery.  
*Submitted by Art Anderson*

### Anderson's Fairway Grocery

Charles A. Anderson married Bertha Grothe in Hendrum, MN on August 17, 1907. They lived in Perley, Wauban, and Thief River Falls before moving to Greenbush in 1917.

Charles accepted a job as Assistant Cashier at the Peoples State Bank. He was also Special Deputy Examiner for two years, Postmaster for eight years, and he owned and operated Anderson's Fairway Grocery Store for 13 years.

Both Charles and Bertha were active members of Bethel Lutheran Church. He was treasurer for 20 years and she was president and treasurer of the Bethel Ladies Aid and also a Sunday school teacher. Charles was village treasurer and clerk of the council for many years. Bertha was active in the hospital guild and the garden club.

They had four children Paul, Valberg, Carol, and Harold.

*Submitted by Linda Gieseke from information from the Greenbush Tribune.*

### Antiques Are Us

Antiques Are Us opened June, 1988 in the former Standard Station/Gambles Store. The building was rented from Kenneth and MaryAnn Johnson. The business was owned and operated by Hector and Bernie Reese, George and Anna Rasmussen, and Jeffrey and Cynthia Pieterick.

Antiques Are Us bought and sold antique furniture, dishes, glassware, crockery, and other items. They were open seasonally from Memorial Day through Christmas. They closed in October, 1990.

*Submitted by Jeff Pieterick.*

### Auto Designs

Auto Designs was started by owners Pete and Natalie Stauffenecker in Hereim Township in July of 1997. Auto Designs is a business that provides vinyl applications for all types of vehicles from cars, to pickups, boats, trucks, and vans. We apply stripes, graphics and lettering from the smallest designs to the very largest that make every vehicle unique. We have a shop located on the farm for service and also travel over the road to auto dealers, body shops and any other locations necessary to provide service in all of northern Minnesota.

*Submitted by Pete Stauffenecker*

### Banks

#### Early Banks of Greenbush

##### Farmers and Merchants State Bank

Farmers and Merchants State Bank opened for business about 1900 in Old Greenbush and moved to West Greenbush in 1904.

The October 22, 1908, Greenbush Tribune reported H. Samstad finished work on the foundation for the new bank and floor joists would be laid that fall. By May 28, 1909, brickwork was completed. The roof went on the next week. H.E. Wold, local artist, decorated the interior and by October 8, 1909, the bank was ready for business in the "state of the art building" on the east 90 feet of the north-west corner of Block 11 Lot 12 on Main Street across from the present Tribune building.

May 7, 1909 Tribune: D.E. Tawney was President from earliest record to the end. A.A. Burkee was cashier, A.H. Foss and G.M.

Stebbins directors. Total deposits were \$44,010.

June 20, 1913: A.A. Burkee resigned as cashier but remained on the board. G.!. Brandt became cashier. P.E. Baumgartner replaced Foss as director. The west 40 feet of lots 11 and 12 containing the print shop were deeded to E.R. Umpleby.

By 1919, Andrew Pelowski became Vice President and H.A. Von Rohr, Assistant Cashier.

On October 6, 1920, Andrew Pelowski and George Baumgartner were directors. The cash reserve on hand was \$9,000 more than required by law. By November 15, 1920, total deposits were \$250,251 but the reserve was \$720 less than required. By December 31, 1923, the reserve was \$4,200 less than required by law.

Bank directors voluntarily closed the bank. It did not open for business June 24, 1925. In mid-June 1931 the building was leased by the government and housed the post office until early 1964. The once stately bank was demolished in 1968. Remedies now occupies the area.

### State Bank of Greenbush



State Bank of Greenbush (photo courtesy of Roseau County Museum)

The State Bank of Greenbush was established in 1904 in a frame building on the Tribune corner. Although the bank was across from the Kukowski Block fire, it also burned on December 27, 1907. The cement block building (later the Tribune) was built in 1908. In April 1909, the frame structure that temporarily housed the bank was moved to the the country (probably to Harold J. Johnson's farm).



State Bank of Greenbush (photo submitted by Henry C. Nubson)

Management was stable. Published bank statements in 1909 listed Thorbjorn Anderson as president, Torjus Lundevall as cashier, Thorbjorn Anderson, and W.B. Torgerson directors. In 1912, Mike

Sereson was assistant cashier and then head cashier in 1913, when Torjus Lundevall became a director.

In 1917, A.D. Stephens of Crookston was President. Torjus Lundevall vice president, Mike Sereson cashier, and G.H. Seltz assistant cashier.

In August 1920, Phil Slominski was vice president, A.E. Holdahl cashier, Phil Slominski and Olof Holdahl directors. The November 15, 1920, statement showed cash reserves \$4200 less than required by law. Total deposits were listed at \$181,059.

The State Bank of Greenbush closed December 8, 1920. On December 24, 1920, stockholders met with Mr. Smith, State Banking Department, and reopened on January 5, 1921, with Hans Lerum, president, Phillip Slominski vice president, A.K. Czyrson vice president, and Charles A. Anderson cashier.

Peoples State Bank moved into and shared this building, but as a separate business, although Hans Lerum was president of both banks.

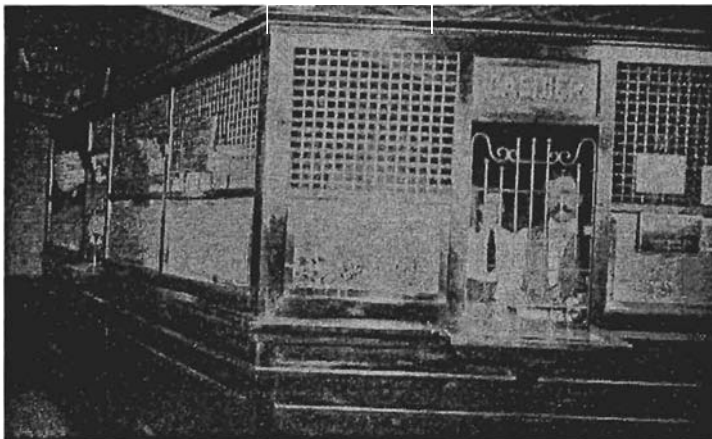
The Tribune of April 6, 1923, reported the State Bank of Greenbush taken over by the State Banking Department and closed forever. Deposits were down to \$75,000.

### Northern State Bank

A third bank, the Northern State Bank, also operated in Greenbush in 1905 with B.T. Piesik as Cashier. This bit of information was in the Roseau Times Region May 29, 1905. The bank was not operating by the fall of 1908.

### Peoples State Bank

Peoples State Bank was started when A.A. Burkee resigned as cashier of Farmers and Merchants Bank. The organizational meeting was held June 14, 1913. Officers were Joseph Mekash president, Hans Lerum vice president and A.A. Burkee cashier. Others involved were Peter Rutkowski and O.I. Christianson. The bank opened October 1, 1913, in a frame building on Lot 9 Block 11, now Twins Rock'n 50's Cafe. Capital stock was placed at \$12,000 with a surplus of \$2000.



People's State Bank interior. (photo courtesy of Milt Sather)

In 1917 Hans Lerum became president.

In October 1920, A.K. Czyrson was cashier, John Schires and Harold I. Johnson directors. Deposits were \$105,219 with \$2,300 over required cash reserves.

November 1920: Peter Rutkowski replaced Director Schires.

January 1921: Peoples State Bank moved into the State Bank of Greenbush building (now Tribune) to share facilities.

At the close of 1923, the bank had \$6,000 over required cash

reserves. Hans Lerum was president, Harold J. Johnson, vice president, A.K. Czyrson, cashier, John Schires and Peter Rutkowski directors.

Hans Lerum died at age 53 in January of 1924. By May 2, 1924, Harold I. Johnson was president. Harold Lerum, Hans' son, assistant cashier, Peter Rutkowski vice president. Czyrson continued as cashier and Schires as director.

The December 31, 1926, statement showed \$27,000 cash reserve and no borrowed money.

On May 4, 1927, the published statement for April 25, 1927, showed cash reserves down to \$11,500, only \$450 less than required by law, but also \$15,000 borrowed money. Julius Johnson, assistant cashier, signed the statement due to the sudden departure on April 28 of Cashier Czyrson, claiming serious illness.

Peoples State Bank failed in early May, 1927.

The Tribune of May 13, 1927, informed the public that cashier Czyrson sent resignations as school board treasurer, village treasurer, and bank cashier by mail from Minneapolis.

The story continued, "We have been told by those who should know that the bank could have remained open just as well now as it did a year ago, but Mr. Czyrson's withdrawing and not being here to help straighten out matters left nothing to be done except to ask the banking department to take charge and straighten up affairs."

The May 22 Tribune of 1927 headlined, "Health of A.K. Czyrson Not Bad." A former Greenbush resident visited with him in Bellingham, Washington. Czyrson seemed happy and in good health. Czyrson had accepted his invitation to spend a couple weeks, but when this man received a letter about the closing of the bank, Czyrson suddenly took the boat to Seattle.

### Greenbush Credit Corporation

In July of 1923 Greenbush Credit Corporation was formed. Incorporation papers were recorded on August 28, 1923. The purpose, according to the Tribune of July 27, 1923, "was to handle government money put out at 7 percent on chattel mortgage security, and is a branch of the Intermediate Credit Bank of St. Paul." The first board of directors included: Hans Lerum president, Harold I. Johnson vice president, A.K. Czyrson secretary - treasurer, Peter Rutkowski and A.G. Johnson of Strathcona.

The other incorporators were: Christ H. Sogn, M.G. Bertilrud, A.K. Anderson, Ed Watrud, Albert O. Anderson, Knute Anderson all of Greenbush, John H. Melick, S.A. Majer, Theo O. Flaten and Ludwig Larson of Strathcona. Capital stock was \$10,000.

Articles of incorporation stated: the "purposes of the company shall be to advance and *lor* lend money to, and/or furnish and/or procure credit or credit facilities for persons, firms or corporations engaged in the production of and/or marketing of staple agricultural products."

No other information was found as to the business of the Corporation or of its demise.

Submitted by Myrna Sovde

Information: Greenbush Tribune and Roseau Co. Register of Deeds

Greenbush State Bank  
Ingvald & Adele Folland  
1935-1981

In 1935, in the midst of the Great Depression and four years before the onset of World War II, the Greenbush State Bank opened

for business. The town had already seen three banks open and close due to the exaggerated economic cycles of prosperity and stagnation and the floundering agricultural economy.

In an effort to organize a local bank, a delegation met with Norvald Folland, then president of the Strandquist State Bank. Among those initiating this start-up were Olaf Hildahl, Arnold Hildahl, Andrew Clay, Joe Evans, and Helmer Gavick. The group developed a formal application for a bank charter, which was approved by the Commissioner of Banks on August 9, 1935. On its opening day of business, the bank staff numbered two: Norvald Folland, cashier; and Carol Anderson, assistant cashier. The first board of directors was comprised of brothers Ingvald Norvald and Torger Folland; as well as George Philstrom, Carl Hjelle, Richard Spilde, Andrew Clay, Joe Evans, and Arnold Hildahl.

Temporary quarters were established in the Nubson Chevrolet showroom and the bank was under the management of N.O. Folland, cashier, and Carol Anderson, the first staff member, who was the sole employee for much of the time. Records indicate that Thomas Metvedt made the first deposit, a checking account, and later in the first day of business, Nick Kalinowski stopped in to inquire about a loan. He was promptly granted the first loan to be placed in the books of the bank. By December 31, 1935, bank resources had grown to \$68,315.89. Of this amount, deposits were \$56,315.89. Loans made to bank customers totaled \$36,096.83 at the end of the first calendar year.

In 1937, Ingvald Folland took over responsibility for operating the bank when Norvald moved to another bank venture in Karlstad.

Ingvald Folland, the seventh of ten children of Isak and Secelie Folland, was born on his family's farm near Halma, Minnesota in 1904. In 1927, he and his brother Fritz opened Halma Motors, a garage and filling station. Despite widespread economic distress, the business continued until 1936. The following year, he began his career in the Greenbush State Bank.

Adele Elton Folland was born in Pinecreek, Minnesota. She was the oldest of six children born to Martin and Selma Elton. After graduation from Bemidji Teachers College, she taught grades one through eight in Pinecreek. In 1936, while working a **summer** job at the Halma Post Office, she met Ingvald, whose garage business was across the street. The two were married July 16, 1938. They had three children: Stuart Folland, Pensacola, Florida; Aletha Gloege, **Nimrod**, Minnesota; and Marcia Folland, Greenbush, Minnesota. Adele worked in the bank from the mid-1940s until her retirement in 1977.

Ingvald and Adele were active in numerous community projects, including village government, school and hospital boards, the Greenbush Airport, housing for the elderly, Pelan Pioneer Park and the Greenbush Golf Association. The entire community united in the planning and fund-raising for the Greenbush Community Hospital and Nursing Home, and Ingvald served as the hospital board treasurer from its inception until his retirement from the board in 1978. Both Ingvald and Adele were active members of Bethel Lutheran Church.

Adele was known for her exuberant tulip garden - a riot of yellow and red. Her tulip party became an annual event, and all guests were invited to cut tulips to enjoy in their own homes.

Ingvald was a man of many interests. A constant in his life was his love of farming. He studied farm operations and policies and was actively involved in his own small grain farm until the 1980s. He loved trees and planted thousands of evergreens in the village of Greenbush. To recognize his early and ongoing efforts in beauti-

fying and developing the town, the "I.S. Folland Welcome Park" was dedicated June 30, 1990, Governor Rudy Perpich was among those present. Carolyn Eeg, Greenbush Community Coordinator, presided over this event, which included a ribbon cutting ceremony for the wild flower route from Greenbush to Baudette.



Ingvald and Adele Folland (photo courtesy of Marcia Folland)

The Follands sold their bank shares in 1981. Ingvald and Adele were profoundly grateful to the community and the bank staff for their support and good will. The Greenbush State Bank was founded on the principles of providing sound banking services to the community and promoting the economic prosperity of the Greenbush area. Throughout its years of operations, the board of directors and the staff of the bank remained committed to those same principles of community vitality.

In 1988, Ingvald entered an observation in his journal that reflected his motivation for a life of service and commitment to the Greenbush community.

*"In my forty-five years in the Greenbush State Bank I came to appreciate the strength and vitality of the people of our area. Their talents have shaped our community and its institutions. We've lived through adversity and prosperity and learned tough lessons from each. Northwestern Minnesota will continue to change. Business and agricultural practices evolve and bring new challenges and new problems. But rural values remain centered on strong family relationships and a sense of community. That is our greatest asset."*

Ingvald Folland passed away March 23, 1994, at the age of 89. Adele Elton Folland passed away January 1, 2001, at the age of 87. Submitted by Marcia Folland.

### Border State Bank

In 1981, Greenbush State Bank was sold to John D. Carpenter & Associates of Hallock, Minnesota. Carpenter, et al, purchased shares of the bank owned by Greenbush Bancshares, Inc., LS. Folland, Adele Folland and Stuart Folland. Bank assets at the time were approximately \$16 million.

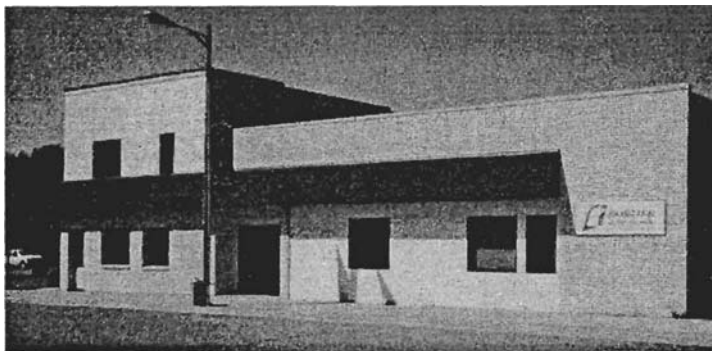
The Board of Directors and Shareholders at the time were John D. Carpenter, Donald M. Johnson, George Gillie, and Gerald Gillie, all of Hallock, MN; Dale Bauer of Fertile, MN; and Bobby D. Wollin, Belmer Thompson, Sander I. Tureson, and K.B. Trangsrud, all of Greenbush. Lowell Anderson and Joe Carriere of Hallock; and Richard Gunter QJTowner, ND, were also shareholders and ex officio directors.

Carpenter, Bauer, Gunter, and Anderson sold their shares in 1983 to the other shareholders of Greenbush Bancshares, Inc. and re-

signed from the Board of Directors. Daniel D. Carriere assumed Joe Carriere's ownership and was elected to the board.

With the pending retirement of K.B. Trangsrud in 1985, Robert I. Hager was hired to succeed him as president in March of 1985. He was also appointed to the board at that time. K.B. Trangsrud retired June 30, 1985, and resigned from the **bank**. Assets of the bank at this time were approximately \$20 million.,

The bank continued under the directorship and ownership of Greenbush Bancshares, Inc. until 1989. Greenbush Bancshares, Inc. consisted of shareholders Donald M. Johnson, George Gillie, Gerald Gillie and Daniel D. Carriere of Hallock; and Sander I. Tureson, Bobby D. Wollin, Belmer Thompson, and Robert J. Hager of Greenbush. The death of Donald M. Johnson in 1989, and the offers from George Gillie, Gerald Gillie, and Bobby D. Wollin to sell their ownership, prompted Daniel D. Carriere and Robert I. Hager to seek new partners to purchase the **bank**.



Border State Bank (photo by Linda Gieseke)

The process of ownership change took approximately 18 months to complete and in 1991, Carriere and Hager welcomed new shareholders to Greenbush Bancshares, Inc. The new shareholders included Gerald Dvergsten, Roger Dvergsten, Ellis Waage, U. Otto Waage, Jr., Richard Sikorski, Rodney Sikorski, Belmer Thompson, Sander I. Tureson and Bernard E. Nelson, all of Greenbush.

During that same period, the Badger State Bank became available for sale. Border Bancshares, Inc. was formed and pursued this purchase in conjunction with Greenbush Bancshares, Inc., and Badger, MN natives, A. Darrell Borgen and David L. Borgen. Upon completion of the purchase, Dean A. Carlson, who joined Greenbush State Bank in 1990, took over as President and Director of **Badger State Bank**. Directorship included Carlson, along with the Borgens, Belmer Thompson and U. Otto Waage Jr., and Hager serving as advisor to **Badger State Bank**.

In 1993, the ownership group began to look to the future of the area, changes in the demographic and economic factors, and the direction of the banking industry. Decisions were made to merge the Greenbush State Bank and Badger State Bank and move into the Roseau, Minnesota, market. G.B. Financial Services, Inc. (which is now the current Border Bancshares, Inc.) was incorporated by Hager to facilitate the merger and expansion. As a result, the banks were merged under the common name of **Border State Bank**. Shareholders Gerald Dvergsten, Roger Dvergsten, Ellis Waage, U. Otto Waage Jr., Richard Sikorski, Rodney Sikorski, Belmer Thompson, Sander I. Tureson and Bernard E. Nelson sold their shares to new shareholders consisting of Wayne L. Czeh, William I. Hagen, Jon L. Miller, and Neal L. Broten of Roseau; Kenneth E. Just of Barnesville, Minnesota; and Fred L. Manuel of Detroit Lakes, Minnesota.

Border State Bank opened its bank in Roseau in 1995 and continued to diversify its economic base by opening a bank in Baudette,

Minnesota, in 1998 and International Falls, Minnesota, in 2000. In 2002, Border Bancshares, Inc. acquired ownership of First National Bank, with locations in Thief River Falls and Middle River, Minnesota.

Currently, Border State Bank operates seven banking locations in the communities stated above. This, along with affiliations with several other Minnesota banks, Border Insurance Network and Investment Centers of America, provides a complete line of financial services to northern Minnesota. Bank assets currently stand at approximately \$215 million.

Border Bancshares, Inc., the bank holding company that owns Border State Banks, is proud to have Greenbush, Minnesota, as its home base. The employees of the corporation and banks who live here, and in the surrounding area, are a product of its education and family core, and a tribute to the achievement of goals in today's business world.

*Submitted by Robert J. Hager*

### Barnes and King

Fred A. Barnes and Charlie King came to Greenbush in the early 60s. They bought Ellerd Paulson's farm in Skagen Township. They milked cows and remodeled the house and buildings.

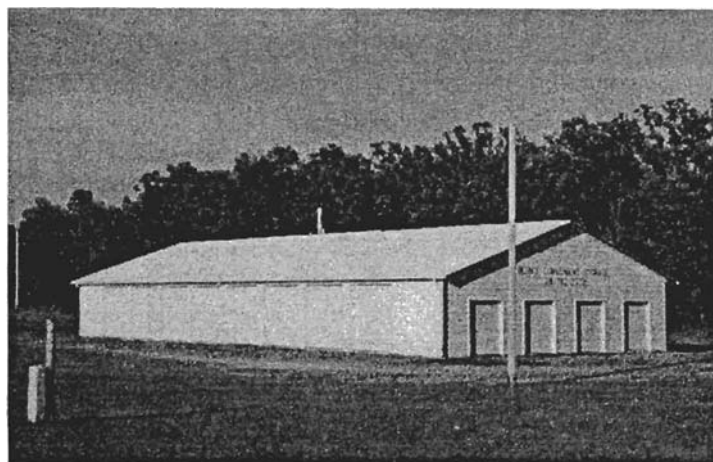
Fred Barnes was a professional concert pianist, graduating from the Music and Art Institute of San Francisco, California. He had a grand piano upstairs and taught music lessons. They also had many clocks and up to 20 to 30 clocks would chime on the hour.

In 1917, Mr. Barnes also had a music store east of the Tribune in the Harry Prosser building, where Oren's Parts is now. He remodeled the office with paneling and carpeting for a studio and taught piano students there. In 1972, Barry and Byron Eeg purchased the farm, and Barnes and King left the area.

*Submitted by Linda Gieseke*

### Bern's Convenient Storage

Bernard Gonshorowski opened Bern's Convenient Storage, in October of 1994, to provide extra storage for homeowners and renters and for out-of-season equipment. Located on the west edge of town at the intersection of Highway 11 and Old Ridge Road, the building contains 24 total rental units. Twelve of the units are 10x22 feet, two are 10x30 feet, and ten are 10x10 feet. The building is of metal construction with a concrete floor. Bern's Convenient Storage will house anything from personal items to household, lawn and garden equipment, and sporting and fishing equipment. Some



Bern's Convenient Storage (photo by Linda Gieseke)



things that can't be stored at the site are hazardous or food items.  
*Submitted by Linda Gieseke with information from The Greenbush Tribune.*

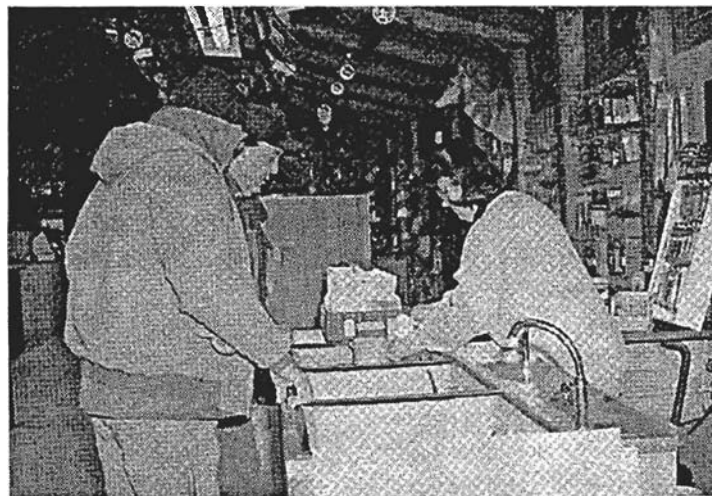
### Boze's Cenex C-Store

On April 3, 1987, Larry and Michelle Kern purchased a bait and tackle business known as Wahl Brothers' Bait and Tackle. We called our business Boze's Bait and Sporting Goods. We were open seven days a week and our hours were 5 a.m. to 11 p.m. After we opened, we gradually turned it into a gas and convenience store. In 1990, we added the Hot Stuff Pizza line. In 1995, we decided to make a real change to the look and operations and paired up with Cenex. We added to the building, changed our operations name to Boze's Cenex C-Store, and continued operating under the name until we sold the business in June of 2003.



Michelle & Larry "Doze" Kern at Doze's Cenex C-Store. *(Tribune photo)*

During the 16 years we were in business our children were our most valued employees. Buffy Taggart, Mary Stauffenecker, Simon Kern and their families live in Greenbush. Buffy works at Wikstrom Telephone in Karlstad, Simon works at Polaris. Josh lives in Greenbush and works for Polaris Industries. Jeremiah attends college in Wadena, Minnesota and is in the North Dakota National Guard. Our last two children, Peter and Elle, are still attending high school in Greenbush.



Michelle Kern measuring minnows. *(Tribune photo)*

Over the years we had many high school employees as well as two very valued employees who worked for us for over ten years, Shirley Pederson and Veronica Novacek. They, with all the young employees, brought much success and great joy to our business.  
*Submitted by Michelle Kern.*

### Braun's Motor Service

Art M. Braun was born July 18, 1910 in Belgrade, MN. He was one of 13 children born to William and Clara Braun. He grew up in Badger and married Frances Kukowski in June 1, 1937. Art started out working for Temanson's Chevrolet. He and Frances moved to St. Thomas, North Dakota before moving back to Greenbush in 1941 and starting Braun's Motor Service.

Merton Kirkeide began working there when he came back from the service in 1953, and stayed for 14 years until he started farming. John Chrzanowki and Art's son, Billy, worked for him, too, along with Gerald Brinkman and Laurel Majer. They had Delco/Autolite, did brake relining, and sold Massey Harris tractors and later Minneapolis Moline. They also had grain augers from Canada, along with discs and other equipment. Billy Johnson from Badger sold used cars for them. Art's daughter, Luverne, did most of the book-keeping for him.

When his other son, Arthur, returned from the service, he worked there for a time, in 1960. He had trained as an electrician in the Navy. Soon he opened a Sylvania Television repair shop in the front of Dorothy Kasprovicz's house, that used to be between the municipal building and the old fire hall. Later he moved his shop to the building where Clara's Variety was.

The Motor Service was a meeting place for the men of the community. People stopped by daily for coffee and conversation. Art had a gruff voice, but a million dollar smile. He helped lots of people at his own expense.

Art Braun was very active in civic and community affairs. He served as mayor of Greenbush for eight terms, including 1948-1952, and again from 1960-1972. He was on the hospital board for 12 years, the Northwest Community Action board, the Sunnyrest Sanatorium board for 25 years, the Blessed Sacrament Church board for 25 years, and a longtime member of the Knights of Columbus. He was also a volunteer firefighter and a member of the Greenbush Lions Club. After Art closed the Motor Service, he went on to be State Representative for the State of Minnesota for this district from 1972-1978. He died January 7, 1989 at Abbott Northwestern Hospital in Minneapolis.

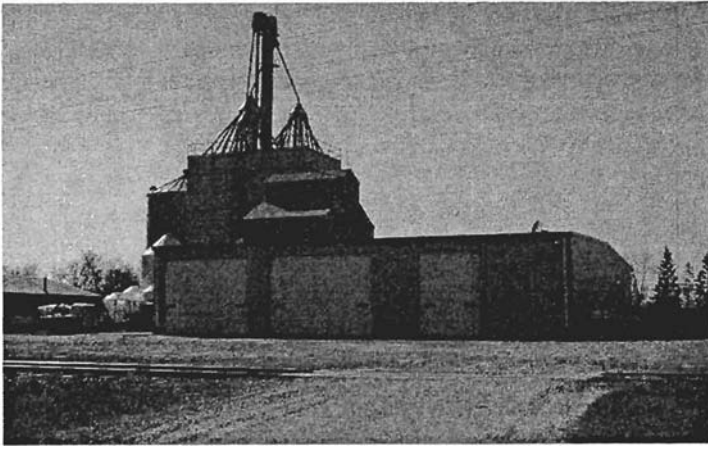
*Submitted by Linda Gieseke with information from Jack Chrzanowki, La Verne Walter; Bernice Kukowski, and the Greenbush Tribune.*

### Burkel Grain Service Inc.

Manufacturers of Northern Feeds.<sup>™</sup>

Peter and Lillian Burkel began their hay and livestock hauling business in 1946. After moving to their present location on Highway II just outside of Greenbush a few short years later, they saw the need for more feed and supplies as livestock and turkey production increased. During the 50s and 60s more trucks were needed to be added to the fleet to transport grain to markets in Duluth and Minneapolis while returning with supplies.

In 1976, the trade name of Northern Feeds was adopted as part of their name and, by 1979, a new feed mill was built to accommodate the need for more production. An extensive line of products and



Burkel Grain Service (photo by Burkel's)

high quality brand names are now included such as **Tuffy's**, Eagles and Nutrisource. Premium quality minerals for beef and dairy cattle, horses, other livestock and poultry are also manufactured and sold.

Protein supplements and complete feeds for all species are produced in bulk and bagged at Northern Feeds and are available there and at other outlets throughout the area. In addition to becoming a one stop shop for the needs of the area feed buyers, in 1987 Burkel's announced that all their feeds were animal byproduct free. That became very important in the coming years with the outbreak of mad cow disease and the requirements imposed by the USDA and FDA.

Burkel Grain Service Inc. is still a family owned business. It is owned and operated by Jerome and Dee, who are second generation, and their sons Aaron and Brian, who are third generation.

*Submitted by Linda Gieseke with information by the Tribune and Jerome Burkel.*

### Burkel's Produce

The local Burkel family is now six generations from the days of their great-great-grandfather's harness shop on Main Street. Burkel's Produce had roots at the turn of the twentieth century when George and Elizabeth Burkel moved to Greenbush from North Dakota. They lived in what is now the Charlie Lund home and operated a harness and shoe shop on the block where the community center is presently located. George later shared this site with a son, Peter, who opened the first Burkel's Produce in one half of the building, dealing in cream, eggs, poultry, and seed.

Eventually Peter would pioneer commercial turkey production in



Burkel's Produce turkey processing line. (photo courtesy of Arlene Wilcox)

the Greenbush area by raising a few hundred bronze birds in the 1920s on the site where Mike and Deb Korczak now make their home. Pete's family managed the breeder hens, incubated and hatched the eggs in their home, raised the market birds, and packed them for shipping. At dressing time, help was gathered and the turkeys were dry picked - fifty to a hundred a day - and then packed whole in barrels to be shipped to Chicago. After finishing their own flock, they would custom-pick barnyard birds for local farmers.

Peter's children, George, John, Peter, Matt, Tony, Elizabeth and Susie, all raised turkeys at some time in the years to follow. John expanded in the business for more than fifty years, until retiring in the 1980s. In 1951, the oldest of Peter's five sons, George, began another business called Burkel Produce. This time it was a turkey processing plant near the stockyards in Greenbush furnished with the most modern equipment available. The birds were eviscerated, U.S. graded, and shipped to market by refrigerator car. The business provided employment for many Greenbush area residents. Though George and his siblings raised most of the turkeys for the



Burkel's Produce Turkey Plant (George Burkel on right) (photo by Arlene Wilcox)

plant, there were also other growers wanting processing for their birds. Several processors were operating in the state. Competition was keen and marketing a challenge. Worst of all were the **rapid**-fire government regulations at that time, demanding constant and costly changes in plant procedures. Despite George's tenacity and a joint effort by the Burkel brothers, the plant closed in 1961. McFarlane Seed purchased the vacant building in 1971.

*Submitted by Jan Burkel.*

### Central Boiler and Central Fireplace

Northwestern Minnesota provides the perfect stage for the development of advanced heating systems from Central Boiler and Central Fireplace, a division of Central Boiler.

In 1984, Dennis Brazier founded Central Boiler in his hometown of Greenbush, Minnesota. He began manufacturing outdoor wood furnaces as a clean, safe, and efficient way to heat with wood. As consumers saw the benefits of an outdoor wood furnace and the quality of the product, the demand increased and prompted the expansion of Central Boiler's dealer network. This network now spreads across the United States and Canada.

Central Boiler is the premier manufacturer of quality outdoor wood furnaces in North America and one of the largest manufacturers in northwestern Minnesota. Central Fireplace, the gas hearth products division of Central Boiler, is dedicated to the design and manufacture of efficient, high performance gas fireplaces.

Based on a personal desire to create safer and more efficient heating products, the company's designs and patents have established

Central Boiler and Central Fireplace as leaders in product quality, design and innovation. The company's philosophy centers on two principles: (1) manufacture the best; and (2) always strive to make it better. This uncompromising attitude is at the core of the company's growth.



Central Boiler 1991 (photo courtesy of Central Boiler)

Several expansion projects to the manufacturing facility have taken place over the years. Since 1991, Central Boiler has grown from a 25,000 square foot facility to over a 100,000 square foot facility with future plans of adding 40,000 square feet.

Characteristic of Central Boiler's commitment to quality, the Classic was the first outdoor wood furnace to be UL and CSA certified. In 2001, Central Boiler began production and distribution of the Hydro Fire outdoor wood furnace line. Thousands of Central Boiler heating systems are in use today in a variety of heating applications, in businesses and in homes. The Classic and Hydro Fire models are available from hundreds of authorized dealers in the United States and Canada.

Central Fireplace, was established in 1998 and markets high efficiency gas fireplaces and stoves. With innovations such as multiple-room heating, unlimited installation versatility and the highest efficiency line currently on the market, Central Fireplace has become a leader in technology and product quality.

In addition, Central Boiler and Central Fireplace offer a variety of heating-related products and accessories.



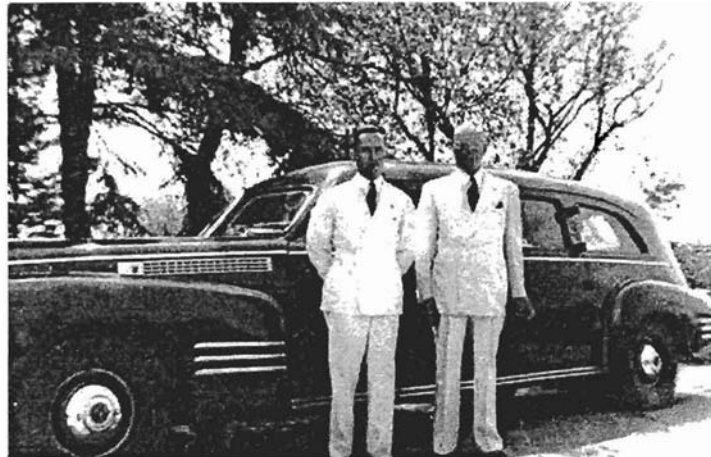
Central Boiler / Central Fireplace 2003 (photo courtesy of Central Boiler)

Central Boiler remains a privately held corporation. The company's work force continues to grow at the Greenbush facility, always striving to acquire talent that represents the highest level of performance in all areas of production, engineering, sales, marketing and customer service.

*Submitted by Janie Brandon of Central Boiler.*

## Collins Funeral Home of Greenbush

The beginning of Collins Funeral Home in Greenbush actually started with the late Arvid Carlson of Middle River. He owned and operated several funeral homes throughout northwestern Minnesota back in the 1920s and 30s, including one here at Greenbush and others at Middle River, Grygla, Lake Bronson, and Argyle. The funeral home here at Greenbush was located on the east side of Main Street on the site of the present Community Center.



Charles Collins and Arvid Carlson in the Early 40s.  
(photo courtesy of Collins Funeral Home)

In the late 1930s, Mr. Carlson formed a partnership with Lawrence I. Lorbecki of Greenbush. In 1938, Charles A. Collins, a licensed embalmer and funeral director, came from St. Paul, MN, to begin working for Mr. Carlson. He purchased a partnership in the funeral home at Middle River in 1942. In 1948, Lawrence and his wife, Clara, bought out Mr. Carlson's share of the business in Greenbush. Charlie, as he was known, purchased the balance of the business in Middle River the same year. He and Lawrence formed a business arrangement, and the funeral home at Greenbush was known as Lorbecki-Collins Funeral Home for many years.

In 1966, Charlie and his son, "Pat", about to graduate from the University of Minnesota, Dept of Mortuary Science, bought out Lorbecki's interests and built a new modern funeral home at its present location at 4th and Minnesota. The original building on Main Street was torn down to make room for the Community Center.

In June of 1967, Pat married the former Jeanne Nelson of Strathcona, and they continued the operation of funeral homes at Greenbush, Middle River and Karlstad, in addition to operating Collins Ambulance Service which covered parts of three counties in Northwestern Minnesota. The ambulance service was turned over to the newly organized Tri-County EMS District in 1975.

There were several additions and improvements to the funeral home over the next few years, including the addition of a larger casket selection room and an office on the north side of the building; enlarging the chapel area; and then the addition of a large garage.

In 1994, Pat and Jeanne's son, Steve, joined the family business, making his home at Greenbush. In October of 1995, the Collins opened Collins Floral & Gifts, remodeling the garage on the north side of the funeral home. Within the year, an addition to the east side of the flower shop became necessary; and again within a few years a garage and storage area was added to the east.

In July of 2003, Steve Collins married the former Meagan Brennan of Wahoo, NE. Both she and Steve are graduates of the University

of Minnesota, Dept. of Mortuary Science; and in December of 2003, moved to Greenbush to join in the operation of the family business. Steve is now the third generation Collins in funeral service in Greenbush.

*Submitted by Jeanne Collins*

### Clara's Variety Store

During 1951, Clara Braaten Sorteberg and her daughters, Carol and Nina, moved to Greenbush from her family farm located in Ross, Minnesota. She worked as a supper cook for Alice Barto in the Coffee Shop. From 1952-1954 she leased the Coffee Shop until Alice Barto returned from her stay in Alaska.

Clara then purchased Rouse's Variety Store, formerly known as Erickson's Store and Gavick's Store, which was located on Main Street where the present-day bank parking lot and drive-up is located.

Clara's Variety Store had items for sale such as sewing notions, cards, gifts, toys and school supplies. Clara enjoyed working at the store, especially during Easter when the store's windows were filled with plants and new Easter hats.



Nina Lund & Clara Sorteberg from Clara's Variety outside the Coffee Shop mid 1950s. *(photo courtesy of Carol Dallum)*

Nina Lund, her loyal employee, and Clara enjoyed visiting with their friends and customers. Noon hours during the school year were very busy as many children would stop to buy candy and ice cream. Penny candy was a favorite item for many children. Saturday nights in the summer were active and Clara stayed open as long as customers wanted, which meant many late hours. Santa Claus Day was another big day as customers packed the store for Christmas shopping.

Clara retired in 1963 and closed the business.

*Submitted by: Carol (Sorteberg) Dallum*

### Custom Cuts Meat Processing Incorporated

Custom Cuts began their licensed business in the fall of 1997. Located three miles east of Greenbush on County Road 4 and 3/4 mile south, Custom Cuts is owned by Mark Miller and Charlie Kappahn. It's truly a family operation because Charlie's father, Keith Kappahn, as well as Charlie's wife Elaine (also Mark's sister) and their children Sarah, Rachel, and Jordan help with the processing. Mark's brother Paul helps as well.

A few short years after Custom Cuts opened, it survived an out-

break of anthrax that struck cattle herds throughout the Midwest. In the fall of 2000, Custom Cuts processed a cow that was later discovered to have anthrax, perhaps the first processors in the state to encounter this devastating problem. Working under Department of Agriculture instruction, they had to incinerate 5,000 pounds of beef to ensure that nothing had been contaminated by the anthrax-stricken beef. Though a set-back, Custom Cuts continued to grow after the ordeal.



Custom Cuts Meat Processing, Inc. *(photo by Custom Cuts Meats)*

Joining the Minnesota Area Meat Processors Association provided trainings, seminars, fellowship and new contacts in the business. As a result, the summer of 2002 brought about a new aspect to the business: smoked products. Another 450 square feet was added to allow for a smoker and a larger freezer. The expansion of Custom Cuts led co-owner Mark Miller to sell off his dairy herd, this was no small step, because a dairy herd had been on the Miller Farm for over 75 years.

As Custom Cuts grew, a retail outlet was the natural next step. Housed on the junction of Highway 32 and 11, Custom Cuts had retail space in Pat Haarstick's store, Only Fitting. Due to area road construction, the business didn't receive much traffic; but the following year, business improved as traffic increased to both Custom Cuts and Haarstick's new store, Total Dollar.

Custom Cuts continues to grow. Another addition is in the planning stages, allowing for in-house slaughter to be out of the stiff Northwest Minnesota winds, larger freezer and cooler, more product volume, and eventually Federal inspections. These will allow Custom Cuts to sell wholesale and retail products both in and out of Minnesota.

From feeding livestock to feeding their friends, Custom Cuts Processing Incorporated will be there to "meat" their customer's needs!  
*Submitted by Charlie Kappahn.*

### D&F Station

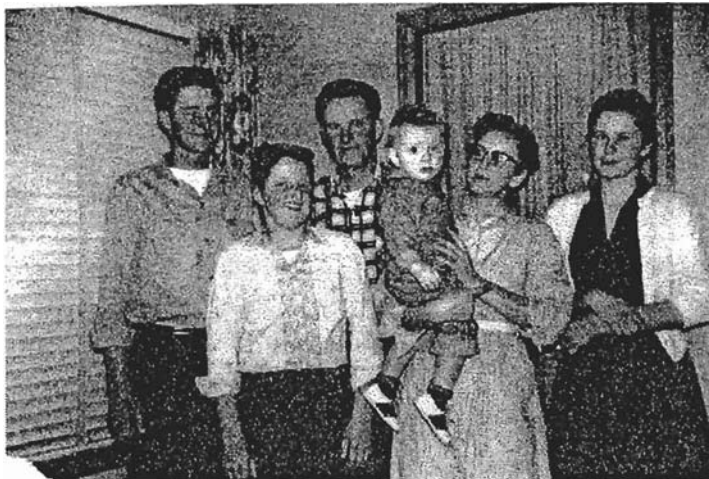
In the fall of 1956, Alfred Sather rented and operated the D&F Station that was located on the Gieseke Comer. The D&F name came with the building. Since Harold and Ethel Fish owned it at the time and it was later sold to John and Deloris Delmaire. D&F may have referred to Delmaire and Fish. Perhaps Ethel was a Delmaire.

Whatever the origin of the name, when Sather took over operation of the garage and service station, he continued running it as D&F. He sold Phillips 66 Petroleum products and a few auto parts from the station and maintained a full-service two-door garage servicing automobiles and machinery.



D&F Station exterior after fire June 28, 1958. (Eul/ice)

The Sathers, a fanning family, were well accustomed to working together and they continued to do so at the garage. The older boys, Alvin and Dean, worked in the garage alongside their dad, and everyone pumped gas at one time or another. Deborah, Alfred's wife, had been a full-share partner in their fanning. Having driven tractors, operated machinery, and worked with the animals, pumping gas was easy work for her. Dean recalls that gas was much cheaper then; he thinks it was between 10 and 30 cents per gallon!



Sather Family circa 1956 - Al, Dean, Alfred, Clark, Deborah, and Eunice. (Eul/ice Korczak photo).

The Sathers lived in an apartment in part of the kitchen-dining combination and a living room downstairs and three small bedrooms upstairs, it was rather cramped living for the family. In addition, it was rather inconvenient to live at the station on weekends, as many times sleep was interrupted by people who had



D&F Service Station interior after the fire in 1958. (Eunice Korczak photo)

stayed too long at a bar and had neglected to purchase gas during working hours!

The station burned on July 26, 1958. The shell remained, but the interior was gutted and the Sathers lost all interior furnishings and possessions. The Sathers discontinued their business at that time, but continued to live in the community.

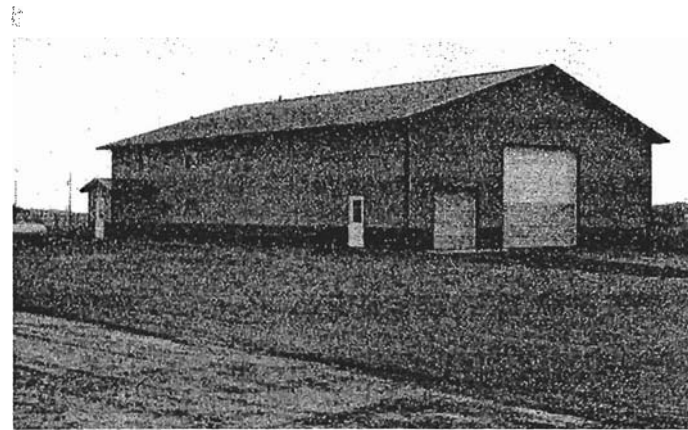
Later the building was repaired and other businesses opened there. Fif-

teen to twenty years later, the building again burned, this time the ground.

Alfred and Deborah had four children: Alvin, Eunice (Udstran Korczak), Dean and Clark.

Submitted by: Eunice Korczak

### PRB Fabrication



DRB Fabrication (pilOto by DRB Fabrication)

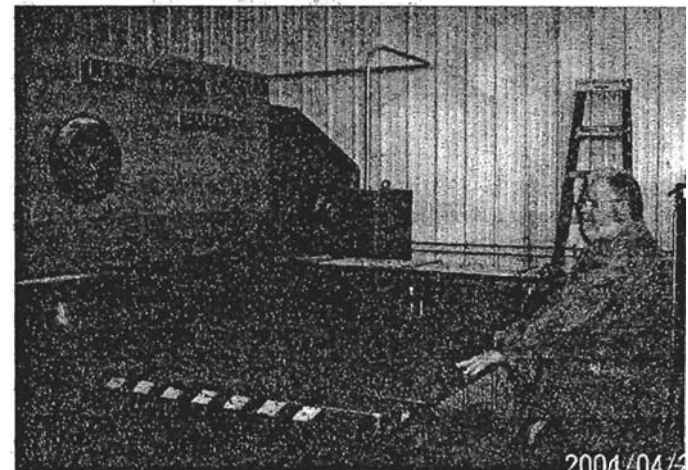
DRB Fabrication, located north of Greenbush next to the pit (entrance of the Greenbush Race Park, is owned by Don R. Brekke. This is a job shop, which builds parts for other companies, 1 capabilities are machining, metal stamping, metal fabrication, a CAD designing.

Ever since Don was a young man going to school at Dunwoody Institute in Minneapolis, his dream was to start his own business. After working for other companies for twenty years, it was time to take the plunge.

In the beginning, he was looking for a building to rent. Don looked at a few facilities, but none of them fit what he was looking for without extensive renovation, Don decided to build a facility to specs with the help of Waage Post Frame. This facility is designed for future expansion.

Don started the prep work on the building site in the summer of 1998. The building was erected in the fall of 1998. Through the winter months, the inside construction and electric wiring was completed. While this was being done, the equipment was moved in place and wired. Once the machines were in place, fabrication could start.

In the beginning, he purchased a CNC mill, tube bender, c



Don Brekke of DRB Fabrication (photo by DRB Fabrication)

saw and a turret lathe. With this equipment, the company was able to fabricate specialty and production race parts for Wahl Bros. Racing. After this equipment was being utilized, he proceeded to acquire other types of equipment such as a small turret press, to do metal stampings for local and regional facilities. Since then, the company has acquired another larger turret press. **With** this acquisition, the company has been able to expand its capabilities. This allows the business to grow and expand into a larger market area. For example, in the beginning the work was done locally, then he found work in central Wisconsin. At present, he is working toward a project in Nebraska.

At the present time, DRB Fabrication purchases and processes approximately 250,000 pounds of steel products per year. Some of the parts produced and **finished** at this facility are shipped worldwide.

*Submitted by Don Brekke*

#### D.W. Mechanical

D.W. Mechanical was established in 1996. Dale Wicklund, owner, does plumbing, sewer and water systems, pipe televising, sewer and water thawing, Port-a-Potty rental, and Posittrak work. Dale holds a master plumbing license, Designer 2 and pumper sewer license, well pump and pittless license for water wells.

D.W. Mechanical is owned and operated by Dale and Annette Wicklund. They work out of their home one mile east of Greenbush on County Road 4. Dale and Annette have two young children, Nels and Emily.

*Submitted by Annette Wicklund*

#### Dan's Bumper to Bumper

In January of 2001, Danny Lorenson opened Dan's Bumper to Bumper in the former Standard Oil/Gambles Building owned by Kenny and Mary Ann Johnson. He sells auto, ag, farm, and industrial parts and accessories. **In the summer** of 2004, he gave the old building a facelift by adding a new roof and **steel** siding.



Dan's Bumper to Bumper Store in Greenbush (photo by Danny Lorenson)

Danny Lorenson is a lifetime resident of Roseau County. He is the son of Randy and Deloris Lorenson of Strathcona, and married to Debra K. Ness of Middle River. they have three children: Annie, Ashley, and Adam.

Prior to owning the Greenbush business, he had worked at Marvins and was also the **first** owner of Paradise Cafe in Strathcona, from September 1987 to July of 1989. He worked at Greenbush Imple-

ment in 1989-1991. He owned the Comer Cafe in Wannaska from 1991-2001, and also Dan's Repair in the former locker plant in Wannaska from 1994-2001. He worked for Polaris in 1992-1993 before starting his Bumper to Bumper business in Greenbush in 2001. Danny brings a wealth of experience to his new business.

*Submitted by Linda Gieseke with information from Danny Lorenson.*

#### De'Lynn's Photography

Before setting up De'Lynn's Studio in her parents' basement, Debbie Nubson attended photography school for two years in Willmar, Minnesota, graduating in 1988. In 1994, she purchased the historic Hildahl house and married Bob Pries. About 1996, after some remodeling had been completed, she moved her business to **the** house. The business occupies a room on the **first** floor.

Debbie has photographed graduates, kids, weddings, and families. She has photographed up to **thirty-five** weddings in a year and says, she has done both graduation and wedding pictures for some people.



Historic Hildahl House (Restored) De'Lynn's Studio (photo by De'Lynn's Studio)

De'Lynn's Studio has always **been** a sideline business for Deb, who at present works days at the Border State Bank at Badger. **In addition to the photography business and** her full time job, Deb has **three active children**. She and **her** husband continue to restore and remodel the **house**. **Understandably**, she feels that the business requires **too** much of her attention on evenings and weekends. Because family is such an important part of her life, Debbie has chosen to **business with** the hope of re-opening after her children have grown.

*Submitted by Deb Pries & Eunice Korczak*

#### Dinus Johnson's Cream Station and Shoe Repair

In the gray stucco house north of Squid's Grocery, Dinus (Dennis) Johnson operated a cream station buying cream from farmers **and** selling to buyers from Grand Forks. When multiple sclerosis caused his muscles to deteriorate too far, he repaired shoes from his wheelchair. The time span was from about 1940 to 1947.

Store front windows flanked the recessed entrance door on Main Street. The cream station was on one side of the entrance and later the shoe repair shop on the opposite side. Huge geraniums **filled**

the shoe shop window.

The rear and upstairs served as living quarters for Dinus, wife Corrine and children Duane, Truman, Edith (Marlys), Jonah (Gayle) and Maylen.

About 1947, Uncle Dick went to a nursing home for a few months until he moved into the Greenbush Community Hospital. With a little hand crank sewing machine, he sewed deerskin moccasins to sell in the hospital waiting room. Later he moved to Bloom's Nursing Home in MiddleRiver.

The building became known as the "village house" when the village took possession and rented the house out as payment for Dick's nursing home care. Dick died in 1968. Mike Korczak, Sr., purchased the house in the late sixties.

His son, Duane Johnson, recalled that the house, originally a school, had been moved in. The basement was excavated by horses, and a concrete foundation and basement were poured by hand. After backfilling, the front wall caved in, so another concrete wall was poured inside. The extra-thick wall on the street side was confirmed by Bernard Gonshorowski, city employee, who assisted in demolishing the house in the summer of 1996 to make way for the courtyard and parking for the new library.

Dinus was born in Hereim Township, April 15, 1906, to Harold J. and Sina Johnson.

*Submitted by Myrna Sovde*

### Dorothy's Tavern

Dorothy Olson was born in Badger to William and Selma Larson. She went to school at Island Home School through the eighth grade. She attended Greenbush High School, graduating in 1939.

After high school, she worked in restaurants and taverns in Greenbush and Badger. She was married twice and had two children Sharon Erickson of Greenbush and Ricky Olson of Fergus Falls.

Dorothy owned a tavern on the east side of Main Street, but when it came time to buy the building she decided to build a new one across the street. She built her 3.2 tavern in 1948 and called it Dorothy's. They carried the bar itself across the street along with other furnishings she owned. The bar was so long they barely got it in. Walking into Dorothy's is a nostalgic step back in time.

The lot that it sits on was vacant at the time. It had previously been occupied by the Charles Hotel, where Dorothy worked in the summer of 1938. Back then, she was paid \$4.00 a week. In the 40s it was lost in a fire that destroyed most of the block including a restaurant, store and seed store.

Back when times were good at Dorothy's, Saturday nights were booming. She always had steady help. Not only did she sell beer,



*Dorothy at Dorothy's Tavern, 1950s. (photo courtesy of Sharon Erickson)*



*Dorothy Olson behind bar of Dorothy's Tavern July 4, 1986. (photo courtesy of Sharon Erickson.)*

but she had a lunch counter where they sold canned shrimp, oysters, Vienna sausages, pigs feet, crackers, etc. The counters were filled with people and music was always on the jukebox. Kids used to go there to play pool and drink pop.

It used to be that Dorothy's was a place where everyone and their dogs belonged to

whom. Then it got so people were going to the lake on weekends and Saturday nights weren't as exciting anymore. Dorothy's stayed open for 41 years and then she chose to not renew her license. She continued to be open for kids to play pool and video games, and to buy pop and candy. She sold antiques, rummage, and some new items. She also sold homemade quilts and rugs. Dorothy continues to live in the apartment upstairs above her tavern.

*Submitted by Linda Gieseke with information from Sharon Erickson and the Greenbush Tribune.*

### Eeg Funeral Chapel The Cedar Chest

Ross T. Eeg was raised in Dewey Township and graduated from Greenbush High School. He went to UND and graduated with a degree in Mortuary Science from the University of Minnesota. He married Deanna Neubert, whom he had met while working at Johnson-Bowman Mortuary. Dee had attended Mankato State and graduated with a degree in Special Education. They moved to Greenbush in 1973.

In 1974 they purchased and operated the Eeg-Listug Funeral Home in Roseau. Dee worked as a home start teacher. In 1975 they built the Eeg Funeral Chapel and the Cedar Chest floral and gift shop in Greenbush. Art Anderson Construction built the modified A-frame building, made from cedar, at the north end of Main Street. The Eegs closed the funeral home in Roseau. Dee worked at the floral shop selling flowers, plants, gifts, and Hallmark Cards. A large addition was made to the Cedar Chest in 1976. Ross and Dee also owned a farm in Skagen Township where they raised beef cattle.



*Eeg Funeral Chapel with The Cedar Chest 1984. (photo by Linda Gieseke)*

They sold the business to Ernie and Linda Gieseke from Detroit Lakes in 1984. Ross worked as a rural mail carrier for Lake Bronson

and Greenbush. Dee works as an aid in the activities department at the Greenbush Nursing Home. Ross loved antiques, woodworking, and sailing. He died at his home in 2003. Ross and Dee raised two children: Tennes who is a nursing home administrator in Tracy, MN and Andrea (Mrs. Jason Reierson) who is a corrections officer and lives in Frazee.

Dee remains on the farm and **continues** to work at the nursing home. She enjoys all kinds of crafts, painting, sewing, and playing with her grandchildren.

*Submitted by Linda Gieseke with information from Dee Eeg.*

### Eleanore's Beauty Shoppe

Eleanore Haaland of rural Badger married Donald Thompson of Soler Township north of Greenbush in 1957. When their children were all in school, she attended beauty school at Thief River Falls Technical College. She started her business in Greenbush in 1969, when she rented the Modern Beauty Shop from Millie Short in up-town Greenbush. After a little over a year she made a shop in her home. She has been in business for over 35 years.

Eleanore has had many employees over the years. The first one was Cory Noel from Badger, followed by Janice Pulczynski, Connie Stanislawski, Helen Folk from Karlstad, Debbie Vacura, and then Peggy Swart for many years.

Donald Thompson has worked in Thief River Falls, farmed and worked for Belmer Thompson at Thompson Chevrolet for many years. He has since retired. Eleanore and Don had 3 children Linda (Duray), Lowell (deceased in 1980), and Beth (Dvergsten). They live on Old Ridge Road where Eleanore still operates her shop.

*Submitted by Linda Gieseke with information from Eleanore Thompson.*

### Emerald Inn, Inc.



Emerald Inn (photos courtesy of Sally Stengrim)

The Emerald Inn was built in Winter, Wisconsin in 1979, and moved here in May of 1979. It was brought in units by flat bed trucks and was set up on the old Sheep Palace grounds next to the Greenlin Supper Club (which is now FineTymes). Each of the 10



Emerald Inn Ground Breaking - Daniel Novacek, Belmer Thompson, Maurice Bertilrud, Kermit Trangsrud, Bob Wollin, Hector Reese, Helen & John Novacek, and Sally & Chet Stengrim. (photo courtesy of Sally Stengrim)

units were put in their place by a large crane that came over from Roseau. Partners in this venture were Daniel Novacek, John and Helen Novacek, and Chester and Sally Stengrim.

In 1987, it was sold to Michael and Elaine Pieterick. They re-decorated the interior and made two of the units into a larger owner's quarters and laundry facility. They also added a parking area for recreational vehicles to hook up.

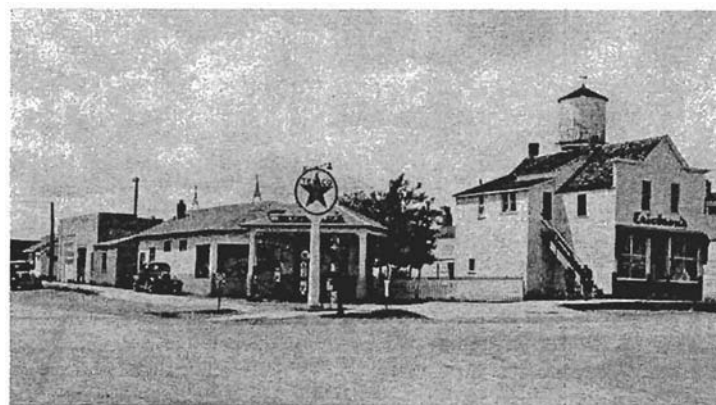
In 1994, Pietericks sold to Robert Dybedal, owner of the Evergreen Motel in Roseau. (Dybedals have since sold the Roseau motel.) They repainted the exterior and did some interior painting, etc. Robert and Marian Dybedal live at the motel and manage it. Marian is the daughter of Clem and Agnes Troskey.

*Submitted by Sally Stengrim*

### Erickson's Gamble Store, Erickson's Variety and Grocery, Erickson Garage, Roynell's Texaco Station

Elling Erickson read an advertisement in the Warren, MN sheaf about a Greenbush business for sale. In 1934, Sophie and Elling Erickson moved their family to Section 34 in Skagen Township (George Burkel farm now), a couple miles north on Highway 11. Elling began a Gamble Store in a tin building on the northeast end of Main Street that later became Lorbiecki's Funeral Home.

After a few years, he bought the Texaco Gas Station on the southwest corner of Main Street. Fred Smebak and Mrs. Carl Smebak were the former owners. Housing both the gas station and Gamble Store in the same building necessitated an addition to the west about a year later. They installed the first electric powered gas pumps in Greenbush.



Erickson Corner - Texaco, Gambles, Garage & Variety - Alice Hamness and her mother Mrs. Elling Erickson (photo courtesy Ann Novacek)

After Helmer Gavick died (1945), Elling purchased the Gavick Store with merchandise, next door to the north. The new business, Erickson's Variety Store, sold general merchandise and groceries.



Sophie and Elling Erickson in their apartment above Erickson Variety Store. (Courtesy Ann Novacek)

In the mid 1950s, Erickson's Variety was sold to Clara Sorteberg.

The musical Erickson family travelled a large area giving concerts at churches. They had ten children: Alice (Tom Hamness), Bernice (Clarence Carlson), Eldor (Fern Mellum), Clarence (Gladys Peterson), Gladys (Roy Gjovik), Evelyn (Nels Hamness), Inez (Ivan



Gjovik), Delbert (Laura Larson), Doris, and Roynell (Gloria Nezo).

Upon retiring, Elling and Sophie moved to a small farm east of Strathcona and then to Thief River Falls. Elling died in 1972 and Sophie in 1974.

Roynell and Clarence built a shop called Erickson Bros. Garage on the back of the Gamble Store lot in the early 1940s (now Sweet-heart Bread warehouse.) They put in the **first** air pressure hoist in Greenbush. Before this mechanic work was done from a pit in the floor. After a couple years, Clarence went to work at Greenbush Implement. In 1951, Eldor purchased the Gamble Store from his father. In 1963 Roynell bought Eldor out.

In 1978, Roynell sold the rest of Erickson corner to Greenbush State Bank. Today part of Border State Bank and the entire parking lot are on the site of the former Erickson Comer.

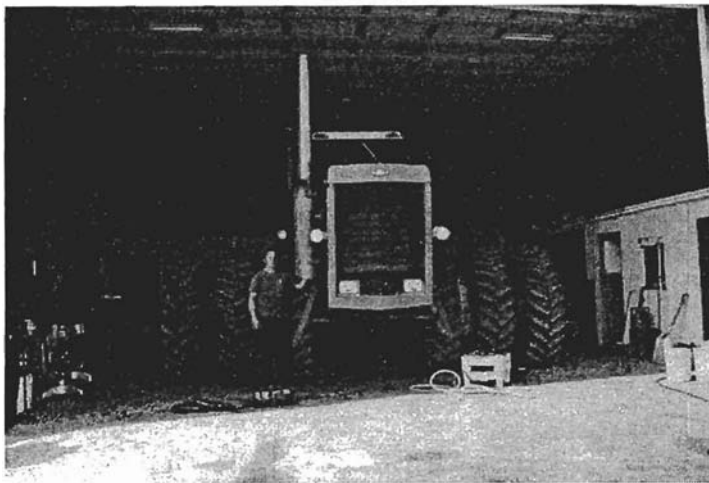
After selling the garage, Roynell partnered with son Brad in Erickson Motors selling used cars. Brad took over in 1985 when Roynell retired.

Roynell drove school bus for over 35 years. His wife, Gloria (Nezo), worked at the Greenbush Hospital and Klefstad Clinic and drove school bus later. They had four children: Bradley, William, Brenda, and Jody. Roynell and Gloria also spent **five** summers working at Lake of the Woods Bible Camp at Baudette. They enjoy volunteering at the Steam Threshers Reunion at Rollag, MN.

*Submitted by Linda Gieseke and Myrna Sovde*

*Information from Tribune, Roynell/ Erickson, and Ann Novacek.*

### Ernie's Repair



Ernie's Repair - Ernie with Blawat Bros. 1156 Ford Versatile Tractor in 1990's.  
*(photo by Karen Janousek)*

Ernie's Repair was started in June 1989 by Ernest Janousek. Ernie began his career in mechanics as a teenager repairing snowmobiles, lawnmowers, and cars at his brother's shop, Leonard's Skidoo dealership in Greenbush. He not only did some trucking and construction over the years, but also worked for Quist's in Greenbush and Borgen's in Badger. Ernie repairs most makes of tractors and trucks. He also does MnDOT inspections either at his place of business or at the customer's. The repair shop is located on his farm in Soler Township just eight miles north of Greenbush. Ernie still resides on his family's farm where he has lived most of his life. He also continues to farm his home place and his grandparent's homestead.

*Submitted by Karen Janousek.*

### Evans General Store & Evans Produce

Oscar Joseph Evans was born December 30, 1895 to Lauris and

Gunhild Evans at Dodge County, MN. When he was a young boy his family moved to Nelson, MN where they lived until 1912 when they moved to Greenbush. He had one brother, Alvin, and a sister, Stella.

He operated a General Store from 1926 until 1938. From then on, he had a produce business until 1955, when he moved to Thief River Falls. There, he and his son had Evans Seed, Wool, Fur, and Steel.

He was a Veteran of WWI and a charter member of the American Legion Moen-Zimek Post 88 and was a life member. Following his discharge from the service, he was married to Marie Smirstik in 1919 in Minneapolis. They had one son, Richard, and a daughter, Doris.

Joe died in Thief River Falls on June 5, 1976. He will be remembered by many for his original sense of humor, as well as his success as a businessman. He was devoted to his family and his many nieces and nephews who had special affection for their Uncle Joe. He also served Greenbush State Bank board for many years.

*Submitted by Linda Gieseke from information in the Greenbush Tribune.*

### FineTymes Restaurant and Lounge

Olaf H. and Gladys Nelson built Highway Lanes in August of 1963. They had six lanes decorated with turquoise and gray plastic furnishings, paneled and blue walls. They closed in August of 1969.

Arnold and Shirley Smith purchased Highway Lanes in May of 1970 and called their new business Smith's Bowl, Dine, and Dance. Previously, they operated a roller skating rink and dance hall in a quonset across the highway. They remodeled the bowling alley with a lounge and dining area, a recreation area, and a dance floor. They operated it until September 1974.

In May of 1977, John and Helen Novacek moved here from Mankato where they had owned the Club Royal. They purchased the bowling alley and made some renovations, including putting in an antique bar that was over 100 years old and was built by the Brunswick Pool Table Company. They called the establishment the Greenlin Supper Club. They closed the bowling alley part of the business and concentrated on food and refreshments.

In September of 1986, the Novaceks retired and sold out to Jeffrey Pieterick who did extensive remodeling and called it the South Branch Supper Club, after the south branch of Two Rivers that runs through town. He had private booths built in the dining area and did a lot of decorating. Jeff owned it for three years before selling to Herbert "Chinny" Reese III and Richard Timm and moving to New York State. Chinny and Dick made some changes too, moving the bar area to the center of the building closer to the kitchen. They called it the Greenbush Supper Club.

Jeff moved back to Greenbush in May of 1995, and took over ownership once again. This time, he called it FineTymes Restaurant and Lounge. He did more remodeling making two private din-



FineTymes Restaurant & Lounge *(photo by Agassiz Realty)*

ing rooms in addition to a larger one in the middle. He also decorates beautifully, with Christmas being the highlight of the year. He now has family style dining, small lounge area, banquet facilities, wedding and other dances, monthly meetings of various organizations, and smorgasbord on Sundays.

*Submitted by Linda Gieseke with information from Jeff Pieterick and the Tribune.*

### Fulton Accounting

Dan Fulton, Certified Public Accountant, has been an accountant since 1975, establishing his own firm in 1984. He is located on Main Street in Roseau. Dan had an office in Greenbush at the corner of Highway 11 and 32 from 1975-1993, when he moved it out to Burkel Grain Service on Highway 11 East. He continued his practice there until 2004. Since 1975 his main employee in Greenbush had been Dee Burkel.

Dan continues to serve Greenbush area people at his Roseau office. Dee divides her time between Burkel Grain and Fulton Accounting.

*Submitted by Linda Gieseke.*

### Gavick's General Store

Helmer I. and Lizzie (Dahl) Gavick bought the General Merchandise Store located across the street from the Chevrolet dealership in 1922. It became my home in 1934 when they adopted me, Jovenia, as their daughter. Their business block was 25'x70'. The store occupied the first floor and full basement with the living quarters on the second floor, reached by an outside wooden stairway.



Gavick's Store - Helmer, Lizzie & daughter Jovenia  
*(photo courtesy of Clarice Martinson)*

Another building on the back of the lot by the alley was divided into spaces for a garage, an ice house filled with sawdust to keep ice blocks for ice boxes, and a storage room (formerly an "outhouse"). My two-room playhouse was on the side yard, surrounded by lawn, flower beds, and a white picket fence, with a gate off Main Street.

One of my memories is an embarrassing one, while raising chickens for an FFA project. The chickens were kept in a pen in the yard but would escape. As they were leading me on a chase through the town, I kept hoping no one would see me before they were gathered up and returned to safety.

Every bit of store space had to be utilized in creative ways to carry all of the merchandise offered for sale. The top shelves were available by the use of a ladder. Other display shelves hung on chains

from hooks in the ceiling. My parents' upstairs bedroom was used as a "dressing room" to try clothes on. The overalls were placed on a free standing four-tier shelving structure. It was a great place for me to take a nap, as a child.

The store hours were long, beginning at 7 a.m., ending around 9 p.m., six days a week. One wall held shelves for grocery items, including canned goods with glass bins for bulk cookies. In the middle of the aisle were boxes of oranges, grapefruit and huge bunches of bananas suspended from the ceiling on a pulley. Occasionally, the banana shipping crates would offer a surprise in the form of a tarantula and would cause an uproar, from fear of being bitten. Standing nearby was a barrel of pickles on the floor, as well as pails of lutefisk in season. The counter held glass jars of pickled pigs feet and herring. Bins built into the counter held bulk sugar, flour and dried beans.

The store also had a hardware section. A raised platform overlooking the store served as the office with a large wall safe for money and records. To buy overshoes, you walked through the warehouse, past summer sausages hanging from the rafters, and down to the basement. The eggs we bought from the local farmers were candled and kept there, as well, in the cooler temperature.

Toward the back of the store several chairs stood around a large flat floor grate covering the furnace, providing a comfortable place for people to pass the time, share problems, and debate or argue over politics or the news of the day. Once in a while, a tobacco chewer would miss the spittoon, hit the hot grate, and cause an unpleasant aroma to spread throughout the store!

One of our specialties were woolen mittens hand knitted by Grandma Gavick, made of wool from the sheep she raised on her farm, and spun into yarn on her spinning wheel. They were valued and purchased mostly during hunting season, by hunters who came from as far away as Chicago and the Twin Cities areas.

Over the years, many people worked with us, but I can only remember two by name: Donna Sanders and Lillian Bergren. The Gavick's store was sold in 1945 to the Ericksons who owned the gas station located next door to our lot.

H.I. Gavick, who lived in Greenbush from 1902, was chief of the fire department and "an all-around public spirited citizen."

*Submitted by Jo Porter-Rose (Jovenia Gavick)*

### Gieseke Funeral Chapel. Gieseke Floral and Gifts Gieseke Trophies. Dream Travel

Ernest Gieseke was born in 1950 and grew up in Marietta, Minnesota. He attended school and graduated from Marietta High School in 1968. He graduated from Willmar State Jr. College in Willmar, Minnesota in 1970 with an A.S. degree. He received his mortuary science training in Minneapolis, Minnesota. He graduated from the University of Minnesota, Dept. of Mortuary Science in 1972 with a B.S. degree in Mortuary Science. He was employed at the Sundeth-Anderson Funeral Home in Minneapolis for five years. He also worked a short time at the Albin Funeral Chapel in Minneapolis as part of his college curriculum.

In 1974, Ernie married Linda Dahle in Milbank, South Dakota. In 1975, they moved to Detroit Lakes where Ernie worked at the Donehower Funeral Home. Linda worked at Detroit State Bank and owned the Plant Shack, a plant and craft business on the lake. In 1981, Ernie became part owner of the Donehower firm. In 1984, he sold his interest in Donehower's to his partner, David Karsnia, and bought the Eeg Funeral Chapel in Greenbush.



Gieseke Funeral Chapel, Floral & Gifts 1985 (photo submitted by Giesekes)

This business became the Gieseke Funeral Chapel and Gieseke Floral and Gifts. Linda ran the full-service flower shop, belonged to FTD, and sold Hallmark, jewelry, and a full line of gifts. The Gieseke's added an office and front foyer in 1997. The wood frame building is constructed of natural cedar siding and shingles. The ceilings are natural pine. The funeral home consists of a chapel, large front foyer, office, merchandise selection room and preparation room.

In 2000, the floral and gift shop closed and Dream Travel was started in its place. After three years and the condition of the travel industry, Dream Travel was closed. The building also houses a trophy building shop, Gieseke Trophies, where trophies are assembled and engraved on computerized engravers for schools, organizations, and snowmobile, motorcross, car racing, etc.

The building is located on the intersection of Main Street North and Minnesota Avenue in downtown Greenbush, where the business district meets the residential area. The address, 307 Main Street North, is just two blocks north of Minnesota State Highway 11. Giesekes live next door on Minnesota Avenue on the same corner lot.

Ernie is a fully licensed funeral director and embalmer in both Minnesota and North Dakota. He, also, has the designation of Certified Funeral Service Practitioner, which is earned through continuing education and community service. He belongs to both the National and Minnesota Funeral Director Associations and is the secretary/treasurer of District 10 of the MFDA.

Both Ernie and Linda have been active in the community. Ernie is a charter member of the Lions and serves as treasurer. He is also treasurer of the Boy Scouts, and Ernie and Linda have been on the board for many years. Linda has been involved with the Town and Country Club for twenty years, serving as president twice and both she and Ernie have been on the board. They belong to Bethel Lutheran Church.

Ernie and Linda have two grown children. Christine graduated from Bemidji State University, with a Bachelor of Arts degree in English and a Bachelor of Science degree in education. Andrew graduated from Northwood University in Midland, Michigan with Bachelor of Business degrees in Automotive Marketing, Marketing, and Management. They both live and work in the Twin Cities Metro area.

.Submitted by Linda and Ernie Gieseke

### History of the northwest corner of **Main** Street and Minnesota Ave (Gieseke Funeral Chapel)

Homesteaded by John O. Hereim - He died in 1903 - was probated to his son Ole O. and Kjeste Hereim, Sr. in 1904/ Sold to - A. and Hilda Kaiser in 1904 - Then to Northern Townsite Company,

and to Public Lands for the City of Greenbush 1904/ Surveyed for road in 1921 / Sale of tax forfeited land by State of Minnesota to S.A. and Alva Mattson 1935 / S.A. and Alva Mattson to Alvin Turnwall in 1940 & Karlstad Motor Company installed gas pumps / S.A. and Alva Mattson sold it again, this time to Walter C. Divine in 1944 / S.A. and Alva Mattson to Ellert and Hazel Paulson in 1945 / Ellert and Hazel Paulson to Vernon F. and Florence F. Olson in 1947 / Ellert and Hazel Paulson sold it again, this time to Henry and Eleanor Schantzen in 1948 / Henry and Eleanor Schantzen to Harold and Ethel Fish in 1949 - D&F Service Station run by Alfred Sather (Fire destroyed the upstairs apartment on July 26, 1958)

Harold and Ethel Fish to John and Delores Delmaire in 1959 / John and Deloris Delmaire to Herbert and Lou Vicia Reese in 1959 / Herbert and Lou Vicia Reese sold the east half to Riley L. and Glenda Ann Wallace in 1974 (Fire destroyed the building) / Herbert and Lou Vicia Reese sold the east half again, this time to Roslyn "Ross" T. and Deanna Eeg in 1975 / Roslyn "Ross" T. and Deanna Eeg sold the east half to Ernest and Linda Gieseke in 1984/ Lou Vicia Reese sold the west half to Ernest and Linda Gieseke in 1984.

Gieseke's have their Funeral Chapel on the east half facing Minnesota Ave and the Trophy Shop facing Main Street. Their residence is on the west half facing Minnesota Avenue.

Submitted by Linda Gieseke

### Graff Construction



Graff Construction at work. (photos by GrafJ Construction)

In 1975, Joel Graff, after working on road construction in various areas that required him being away from home all week, decided to try it on his own and purchased his own machine. It was a Terex



Graff Construction - Joel Graff (photo by GrafJ Construction)